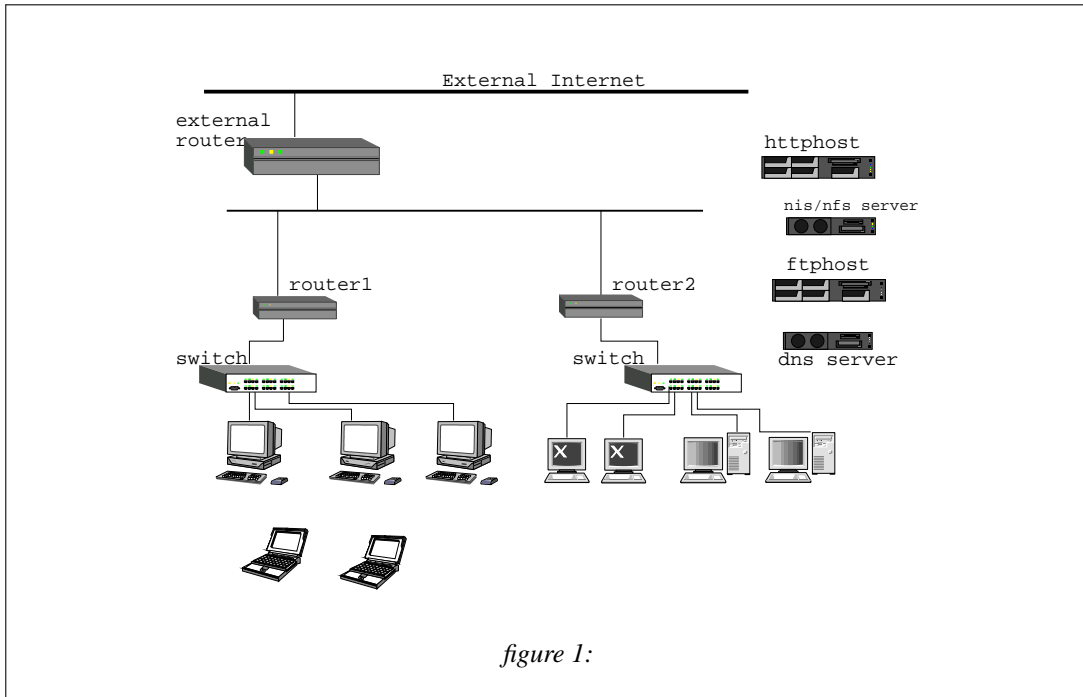


- 1) A simple network setup is shown in *figure 1* below. You may assume the following :
- The external router is providing filtering (by port, protocol & IP), Address translation (inbound and outbound) to manage the network traffic to, from and through the router.
 - Both internal routers are providing similar filtering.
 - The httphost and ftphost servers are accessible from the Internet as well as from the internal networks.
 - The network provides a DMZ and 2 subnets, one for trusted users and one for untrusted users.
 - Computers on the untrusted net may only access the internet, the ftphost and httphost, authentication, file & mail servers, as well as any machine on the untrusted net.
 - Computers on the trusted net may access any server or machine on any subnet as well as the internet.
 - It is possible that laptops might be connected to either subnet



You may prepare up to 2 sides of A4 notes in support of your network design and configuration. These notes may be brought into the exam and will be handed in with your answer book(s).

You should consider, at least, the location of the servers, the interface addresses and subnet addresses that you will use. You should also consider the routing rules and requirements. You may wish to refer to `/etc/services` or similar for port numbers and protocols.